

Reporting verbs





Direct speech into reported speech

We can also use many other verbs to report what someone said, like **promise, warn, advise** and **recommend**.

(we can often choose if we want to use **'that'** or not in English)





Ask

ask + someone + if / question word + clause

- I asked my boss if I could leave early.
- She asked them where the station was.



www.Ublearner.com

www.Ublearner.com

www.Ublearner.com

www.Ublearner.com

www.Ublearner.com

www.Ublearner.com



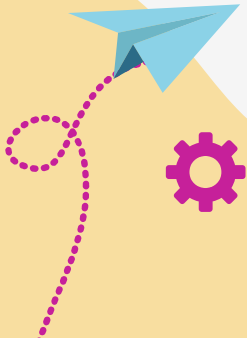
Advise

Advise + someone + to + infinitive

- She **advised** him **to see** a doctor.

Advise + that + infinitive

- The staff **advise** **that** you **carry** water at all times.





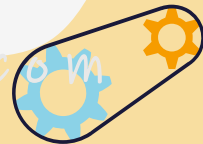
Agree

Agree + to + infinitive

- We **agreed to meet** the following day.

Agree + that + clause

- I **agreed that** the children could do their homework later.





Decide



decide + to + infinitive

- They **decided to go** to the cinema.

Decide + that + clause

- They **decided that they would go** to the cinema





Promise

Promise + to + infinitive

- He **promised to arrive** early.

Promise + someone + that + clause

- I **promised him that I wouldn't do it again.**





Suggest

www.ublearner.com

Suggest + verb - ing

www.ublearner.com

- **I suggest leaving soon**

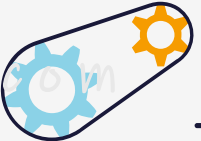
www.ublearner.com

suggest + that + clause

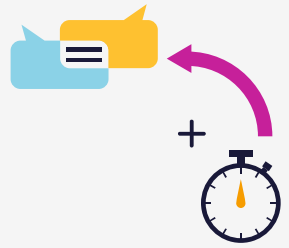
www.ublearner.com

- **I suggest that you come as soon as you can.**

www.ublearner.com



Warn

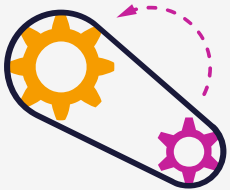


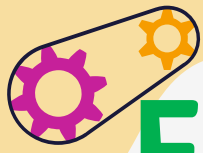
Warn + someone + **not** + **to** + infinitive

- I **warned** them **not to go** in the water.

Warn + someone + **about** + something

- She **warned** us **about the dangerous roads**.





Explain



www.ublearner.com

Explain + that + clause

- The teacher **explained that the course was finished.**

Explain + noun + to + someone

- She **explained the grammar to the students.**



www.ublearner.com



Any questions?

You can find us at:

@UBLearner_Sahar

@English_tree

<https://t.me/ublearner>

Thanks...

